



SPSystem User Manual

期貨網上交易系統使用指南

Contents 目錄

- Overview 系統概述
- Software Installation 軟體安裝程序
- How to start and exit SPSYSTEM怎樣啟動和關閉SP 系統?
- General Preference Window 一般設定
- Table Preference 表格設定
- Change Password 更改密碼
- Save Desktop 儲存桌面
- Load Desktop 載入桌面
- Market Price Window價格資訊視窗
- Price Depth Window價格深度視窗
- Long Price Depth Window詳細價格深度視窗
- General Message Window一般訊息視窗
- Order Entry Window輸入交易指示視窗
- Trade Statistics 成交統計視窗
- Ticker Window市場成交記錄視窗
- Account Information Window戶口資料視窗
- Account Summary 戶口概要
- Order Status 買賣指示
- Account Position 持倉
- Clearing Trade成交結算
- Cash Status 現金結餘
- Company Trade戶口成交
- Connection Status Window 連線狀況視窗

<< Software Installation 軟體安裝程序 >>

STEP 1 第一步

Visit Our Website: https://www.81181133.com/futures_06.htm and download "SP Trader" to your Windows desktop.

在我們的網頁：https://www.81181133.com/futures_06.htm 下載 "SP Trader" 交易軟件至桌面。

STEP 2 第二步



Double click the setup icon from windows desktop to start the installation.
下載完成後，安裝開始。

STEP 3 第三步

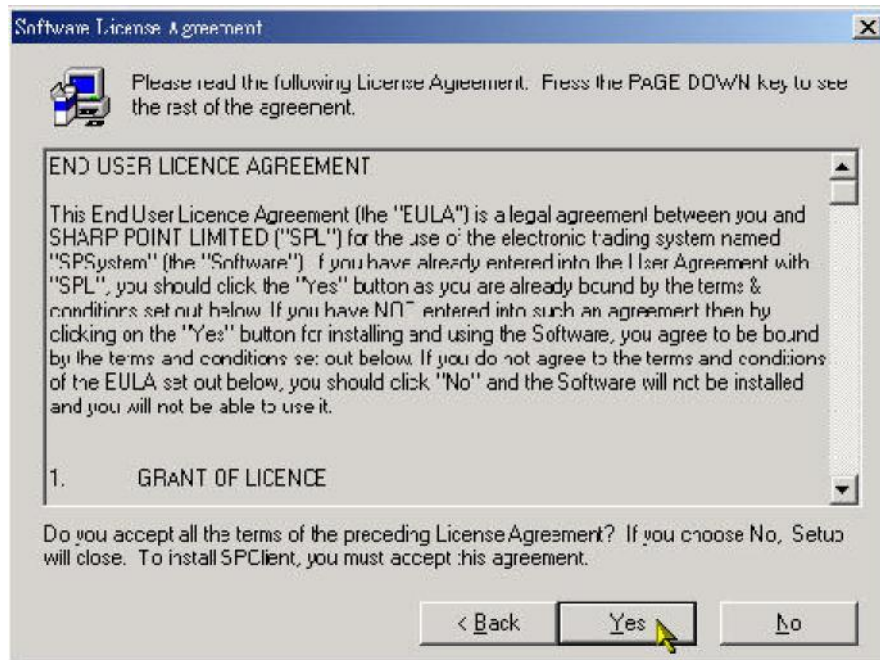
A welcome dialogue box will appear reminding you to close all other running programs. If there are none, click "Next>" to continue.



按"繼續"。

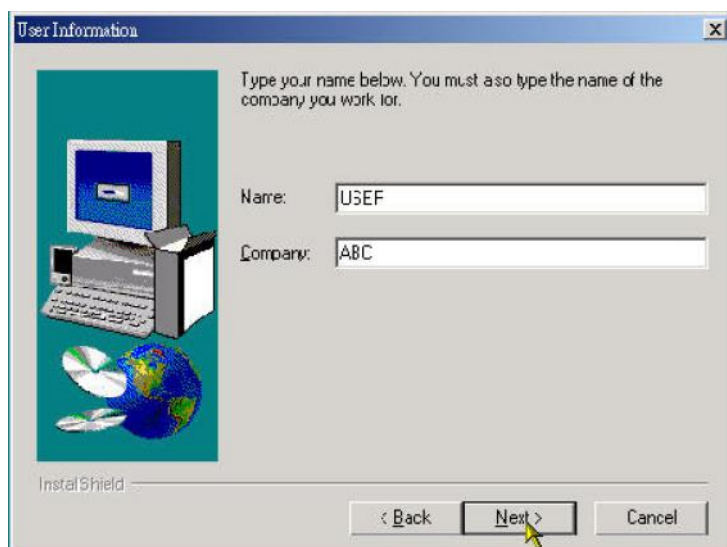
STEP 4 第四步

Read through the Software License Agreement carefully. If you agree to the terms stated, click "Yes" to continue the installation process. Otherwise, click "No" to exit.
請回答“是”。



STEP 5 第五步

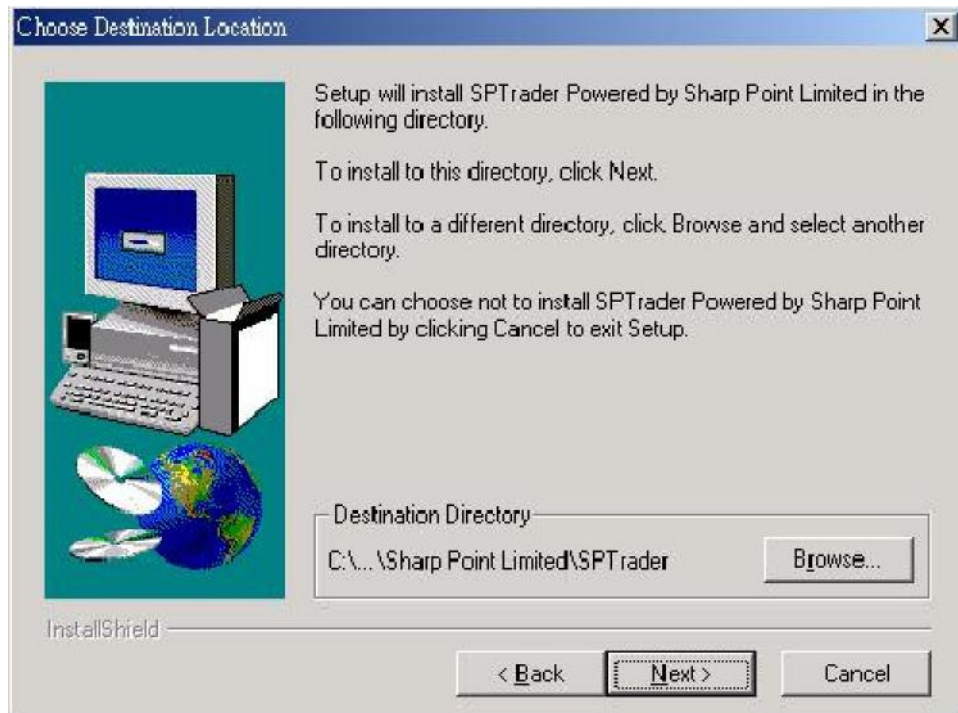
Click "Next>" to continue.
然後按"繼續"。



STEP 6 第六步

Click "Next>" to continue.

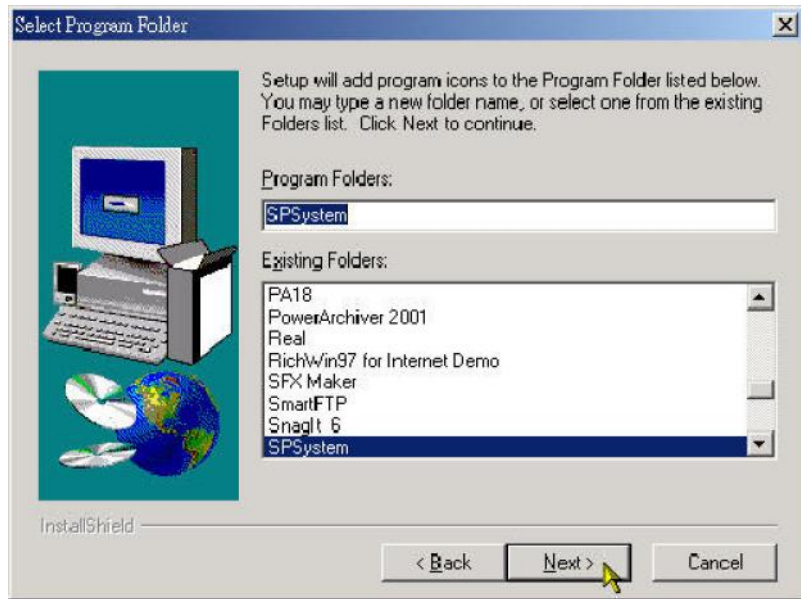
然後按"繼續"。



STEP 7 第七步

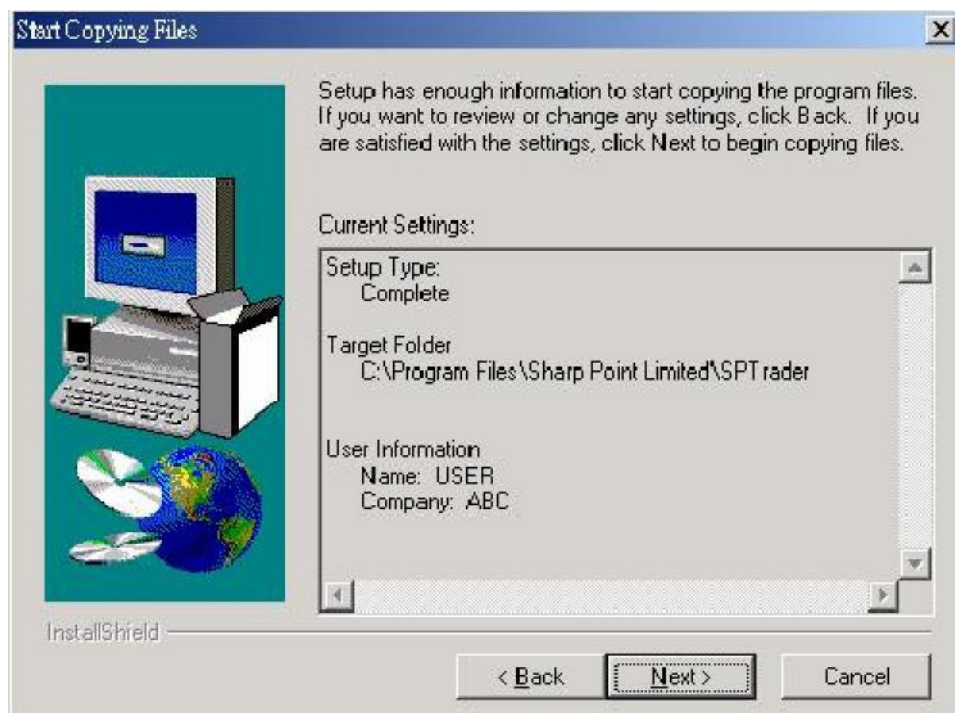
It is chosen as the default Program. Folder where Installation Wizard installs application shortcuts. Click "Next>" to continue or choose another program folder from the list.

再按"繼續"。



STEP 8 第八步

Setup is now ready to begin installation, select the "Next>" to begin.
再按"繼續"。



STEP 9 第九步

SP System application has been successfully installed. To exit setup select "Finish".
最後按"完成"。



<<How to start and exit SPSystem怎樣啓動和關閉SP系統>>

Start Application 啓動應用程式



Start the SP System application from the start menu.

從“開始”功能表啓動SP 系統

Login 登入



Profile: Select "**Futures**"

於 "登入簡檔" 內選擇 "**Futures**"

Enter your User ID and password. Then Click "Accept & Login". The SPSystem window will appear.

輸入你的使用者以及密碼，然後點擊“同意及登入”，SP 系統的視窗將會出現。

Logout 登出

To Logout, please select "Logout" under "File" in the system menu.

請選擇系統功能表“檔案”下的“登出”選項。



Select Language 選擇語言

To change language, please select under "File" in the system menu.

You have 3 type of language to select:

1. English
2. Traditional Chinese
3. Simplified Chinese

請選擇系統功能表“檔案”下改變語言

你有3 種形式的語言可以選擇:

1. 英文
2. 繁體中文
3. 簡體中文



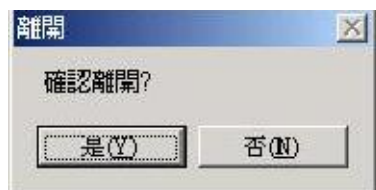
Exit Application 結束應用程式

To quit SP System, please follow the procedure below:

1. Press <Alt> + <F4> OR Select "Exit" under "File" in the system menu OR choose the exit button in the top right corner.
2. Click "Yes" in the dialogue box.

關閉SP 系統，請按照以下程式操作

1. 按住<Alt> + <F4>或者選擇系統功能表“檔案”下的“結束”以及可以選擇右上角的關閉鍵。
2. 點擊對話方塊中的“是(Y) ”



<<General Preference 一般設定>>

Open the window from the Preference Menu. The Interface allows the user to setup the workstation behavior. It is possible to setup:

從”喜好設定”功能表打開此視窗。用戶可以利用此介面建立工作站。它可以建立以下:

Mouse Click behavior

滑鼠點擊方法設定

Inactive Timeout

閒置暫停之時間設定

Alert/Error Message behavior

資訊/錯誤警報

Order Confirm

買賣指示前的確認

Request Accept Alert

已接受買賣指示的信息

Request Error Alert

買賣指示失敗的信息

Active a/c Trade Alert

現時戶口的已成交買賣提示

Associated a/c Trade Alert

管理戶口的已成交買賣提示

Price Deviation with Alert

價格錯誤警報

If higher than the Max. Order size, have alert message.

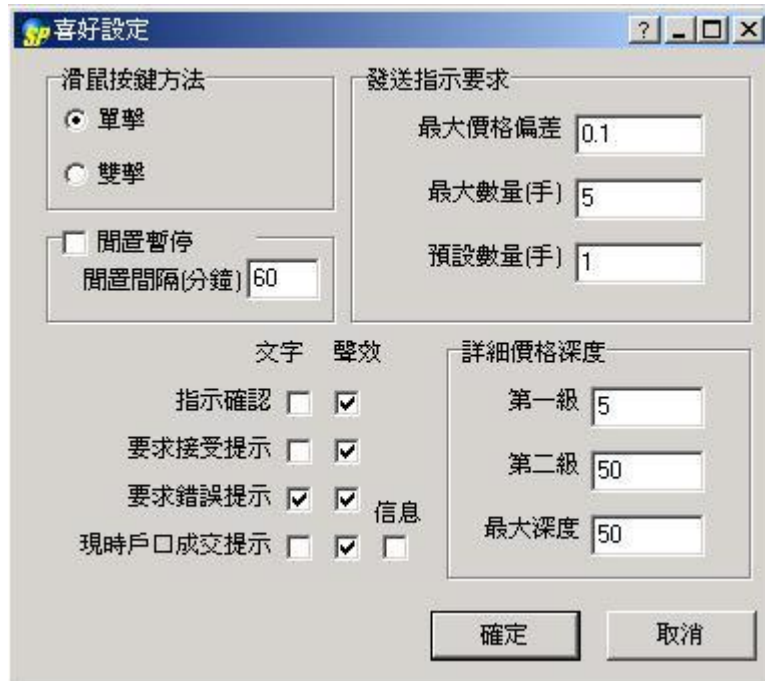
如果超過數量的最大限制，發出警報提示

Default Order Size

預設數量大小

Long Price Depth behavior

詳細價格深度設定



<<Table Preference表格設定>>

Open the following windows from the Table Preference Menu.

從”表格設定”能表打開以下視窗。

The Interface allows the user to set the windows behavior. It is possible to change: 用戶可以對介面進行個性化設置。可以進行如下改變：

Font for all Windows

所有視窗的字體

Data Color

資訊顏色

Bid Color for Market Price Window, Price Depth Window

報價視窗的買價的顏色

Ask Color for Market Price Window, Price Depth Window

報價視窗的賣價的顏色

Table Primary Color for all Windows

所有視窗畫面的底色

Table Secondary Color for all Windows

所有視窗畫面的輔色

Order Entry Color

輸入交易指示視窗的顏色



<<Change Password更改密碼>>

Open the window from the Preference Menu. You can change your password when logging in to the application. The expiration time of the password is set up in the Broker's Server.

從“喜好設定”功能表打開視窗，您要登陸後才可以更改你的密碼。密碼的失效日期設定在我們的伺服器中。



Password Expired 密碼失效

When you have logged in and your password has expired, the following pop-up window will appear:

當你的登陸時發現密碼已經失效，下面的彈出視窗將出現：

When this pop-up window appears, in order to change your password, otherwise your order cannot be submitted

當出現此視窗時，請更改你的密碼，否則你不能進行買賣。



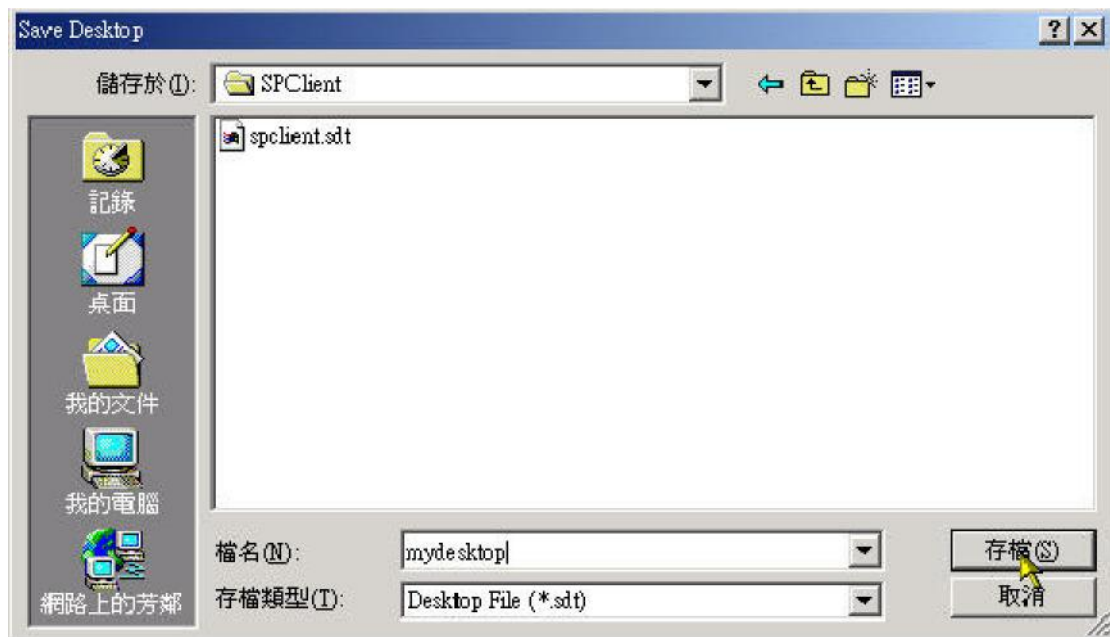
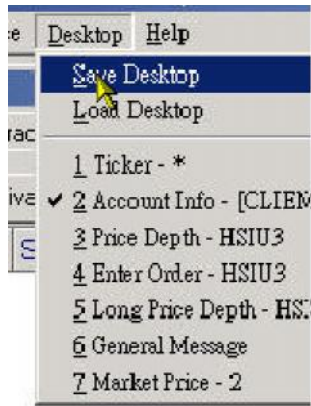
<<Save Desktop 儲存桌面>>

Open the window from the Desktop Menu.

從“桌面”功能表打開視窗。

This function can be used not only for saving settings that has been made in "Table Preferences" and also save the sizes and positions of the opened windows.

此功能不僅僅可以用來進行保存各種頁面，而且可以保存已打開視窗的尺寸以及樣式。

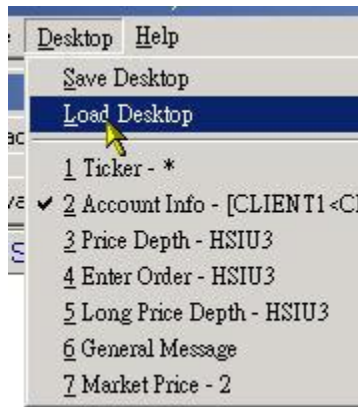


<<Load Desktop載入桌面>>

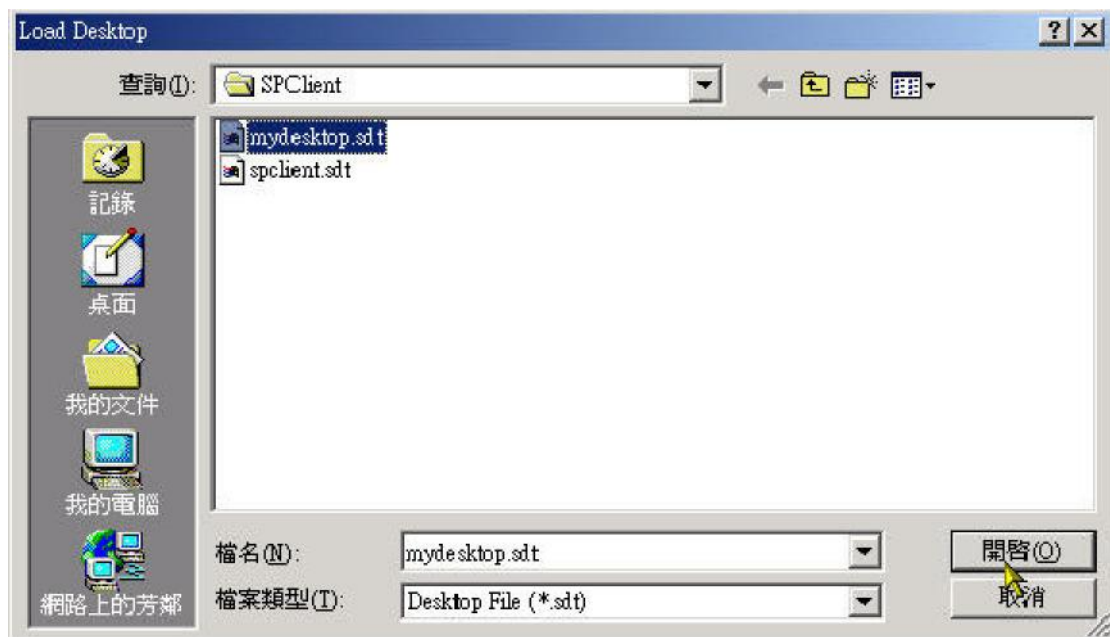
Open the window from the Desktop Menu.

從“桌面”功能表打開視窗

You can select your saved file to restore your desktop status.



你可以載入你所選的文檔。



<<Market Price Window 價格資訊窗口>>

How to construct your Price Window? 怎樣設立報價窗口?

Click the small [|] button in the top of right corner.

點擊右上角的[|]



Then, a price tree is displayed in the left hand side. You can drag and you're your product(s) to the right hand side.

報價目錄在左邊出現。你可以拖動和放下此框到右邊。

Market Price Information價格行情

Id	Month	TSS	BQty	Bid	Ask	AQty	Last/EP	LQty	Chg	Chg%	Volume	High	Low
MHIU3	2003/09	open	5	11156	11162	5	11160/11156	1	-137	-1.2%	786	11250	11115
MHIV3	2003/10	open	1	11157	11159	1	11154/11162	1	-141	-1.2%	3596	11250	11126
MHIZ3	2003/12	open	1	11112	11126	1	11109	1	-149	-1.3%	11	11160	11100
MHIH4	2004/03	open	1	11057	11073	1	11064	1	-133	-1.2%	2	11089	11064

Description of the Window Items 窗口項目說明

Id代號	Product ID商品編號
Month月份	Futures Month期貨月份
TSS狀況	<p>The states of the market:</p> <p>"Open" indicates the market is open.</p> <p>"Pause" means the market is in a pause period. "Close" denotes market close. "Pre-open" stands for Pre-opening stage.</p> <p>"Pre-open Allocation" Pre-open Allocation period.</p> <p>"Open Allocation" Open Allocation period.</p> <p>市場狀況:</p> <p>"Open"表明市場交易正常開放</p> <p>"Pre-open"表明是"開市前輸入買賣盤時段"</p> <p>"Pre-open Allocation"表明是"對盤前時段"</p> <p>"Open Allocation"表明是"對盤時段"</p> <p>"Pause"表明市場交易暫停一段時間</p> <p>"Close"表明市場交易結束</p>
BQty, Bid, Ask, AQty 買入量,買入,賣出,賣出量	<p>The best bid and offer in the market with the accumulated volumes. Changes in the price or quantity of the best bid or offer will be updated immediately with red or blue</p>

	<p>color. Red represents a decrease in value of bid/ask orders and blue denotes an increase in value of bid/ask orders. The color will return to normal in a few seconds.</p> <p>交的價易最格佳和數買入量以價和紅色賣出和價藍色隨即著成時交更新量。改紅變色。代最表佳買入入價或賣出價降，藍色代表買入賣出價格下賣出價格上升，幾秒鐘以後顏色恢復正常。</p>
Last成交	Last traded最後成交價
EP平衡價	<p>The calculated opening price (COP) in pre-market opening period. If COP is not available in the P.M. session users can reload prices to get the COP of the A.M. session.</p> <p>開市時是開盤價，如果開盤價下午無效，用戶可以重新下載價格上午開價盤無效。用戶可以重新下載價格得到上午的開盤價。</p>
LQty成交量	Last traded volume最後成交量
Chg升跌	Price Change價格變動
Chg%升跌	% Price Change Percentage價格變動百分比
Volume成交量	The up-to-the-moment turnover目前成交量
High最高	The up-to-the-moment highest traded price 目前最高成交價
Low最低	The up-to-the-moment lowest traded price 目前最低成交價
Open開市	Opening price開市價
Close前收市	Closing price收市價
Close Date收市日期	Date of Closing price收市價日期
Strike行使價	Options -Strike Price 行使價
Opt期權	C=Call Option, P=Put Option C=認購期權,P=認沽期權

Expiry到期日	Expiry Date到期日
-----------	----------------

<<Price Depth Window 價格深度視窗>>

	B5	B4	B3	B2	B1	A1	A2	A3	A4	A5
Prc	11150	11151	11152	11153	11154	11159	11160	11162	11163	11164
Qty	3	2	1	4	3	5	1	4	5	7

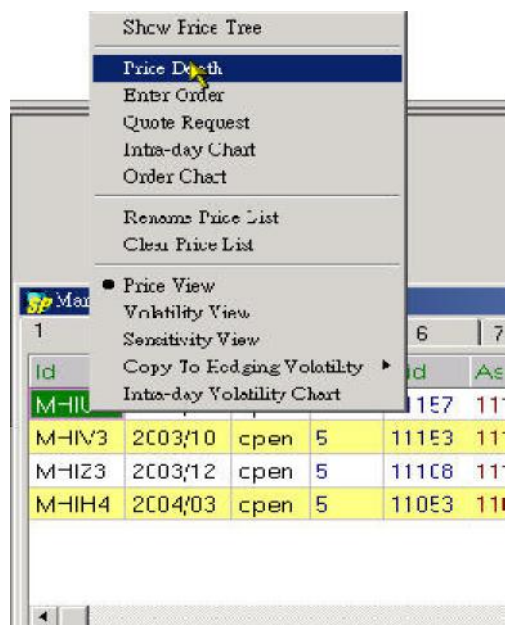
Price Depth window shows, with real-time update, the five best bids and offers in the market together with the accumulated volumes. The best bid starts from B1 and down to B5 while the best ask starts from A1 up to A5.

價格深度視窗顯示的是市場中最新的前五位最佳買入和最佳沽出價。最佳買入價從B1 降到B5，最佳沽出價從A1 升到A5。

Description of the Window Items 窗口項目說明

Prc	報價
Qty	數量
B1-B5	第一到第五的最佳買入價格
A1-A5	第一到第五的最佳沽出價格

View Price Depth 價格幅度視圖



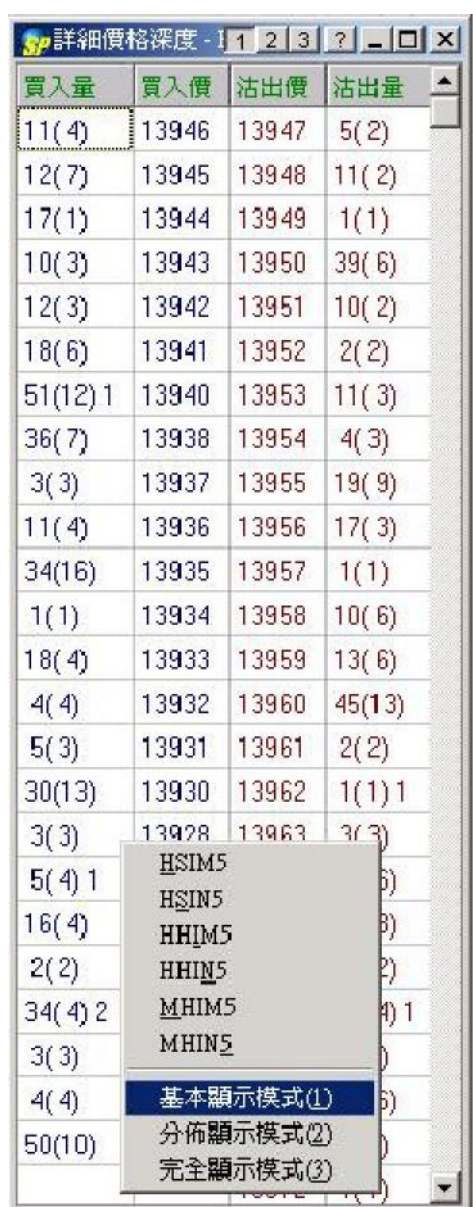
STEP:步驟

1. Select a Product ID in the

Market Price window.選擇一個產品代碼輸入進市場交易價格視窗。

2. Open the Price Depth window from the Quick menu. 從快速功能表中打開價格深度視窗。

<<Long Price Depth Window 詳細價格深度視窗>>



The screenshot shows a window titled '詳細價格深度 - 1' with a table of market data. The table has four columns: '買入量' (Buy Volume), '買入價' (Buy Price), '沽出價' (Sell Price), and '沽出量' (Sell Volume). The data is sorted by price, with the highest price at the top. A context menu is open over the table, listing various product codes and three display modes: '基本顯示模式(1)', '分佈顯示模式(2)', and '完全顯示模式(3)'. The '基本顯示模式(1)' option is currently selected.

買入量	買入價	沽出價	沽出量
11(4)	13946	13947	5(2)
12(7)	13945	13948	11(2)
17(1)	13944	13949	1(1)
10(3)	13943	13950	39(6)
12(3)	13942	13951	10(2)
18(6)	13941	13952	2(2)
51(12)1	13940	13953	11(3)
36(7)	13938	13954	4(3)
3(3)	13937	13955	19(9)
11(4)	13936	13956	17(3)
34(16)	13935	13957	1(1)
1(1)	13934	13958	10(6)
18(4)	13933	13959	13(6)
4(4)	13932	13960	45(13)
5(3)	13931	13961	2(2)
30(13)	13930	13962	1(1)1
3(3)	13928	13963	3(3)
5(4)1			
16(4)			
2(2)			
34(4)2			
3(3)			
4(4)			
50(10)			

Open the window from the Market Menu. You can right click this window to

change product or change window view. There are three view to select:

從“市場資訊”功能表中打開視窗。你可以右擊視窗以改變產品或改變視窗形式有

三種畫面形式可以選擇。

(1) Basic Mode基本顯示模式



買入量	買入價	沽出價	沽出量
11(1)	13945	13947	4(4)
17(2)	13944	13948	13(10)
6(3) 1	13943	13949	12(9)
8(5)	13942	13950	107(16)
13(9)	13941	13951	6(2)
45(7)	13940	13952	22(2)
4(4)	13939	13953	18(5)
10(1)	13938	13954	7(3)
3(3)	13937	13955	54(12) 1
12(6)	13936	13956	1(1)
12(12)	13935	13957	5(4)
5(2)	13934	13958	6(5)
7(7)	13933	13959	1(1)
4(4)	13932	13960	61(11)
20(6)	13931	13963	3(3)
19(6)	13930	13964	9(5)
3(3)	13928	13965	31(7)
4(3) 1	13926	13967	12(3) 1
11(5)	13925	13968	11(3)

(2) Distribution Mode分佈顯示模式

買入累積	買入平均	>50	6-50	1-5	買入量	買入價	沽出價	沽出量	1-5	6-50	>50	沽出平均	沽出累積
2	4765			2(2)	2(2)	4765	4768	3(3)	3(3)			4768	3
7	4764			5(3)	5(3)	4764	4769	13(5)5	13(5)5			4768	16
19	4763		8(1)	4(2)	12(3)	4763	4770	5(5)	5(5)			4769	21
30	4762		8(1)8	3(1)	1(2)8	4762	4771	3(3)	3(3)			4769	24
31	4762			1(1)	1(1)	4761	4772	6(3)	6(3)			4769	30
45	4761			14(6)	14(6)	4760	4773	18(4)	10(3)	8(1)		4771	48
56	4761			11(3)	1(3)	4759	4774	10(4)	10(4)			4771	58
59	4761			3(3)	3(3)	4758	4775	13(5)	13(5)			4772	71
84	4759		10(1)	15(6)	25(7)	4755	4776	1(1)	1(1)			4772	72
86	4759			2(2)	2(2)	4754	4777	2(2)	2(2)			4772	74
96	4758		10(1)		10(1)	4753	4778	3(2)	3(2)			4772	77
106	4757		10(1)		10(1)	4752	4779	5(1)	5(1)			4772	82
108	4757			2(2)	2(2)	4751	4780	57(6)	7(5)	50(3)		4775	139

(3) Full Mode完全顯示模式

6-50	1-5	B.Qty	Bid	Ask	A.Qty	1-5	6-50	>50	A
	1(1)	1(1)	20039	20043	2(1)	2(1)			2
	2(2)	2(2)	20038	20045	3(3)	3(3)			2
	1(1)	1(1)	20037	20046	7(4)4	7(4)4			2
	6(4)	6(4)	20036	20047	2(2)	2(2)			2
	4(2)3	4(2)3	20035	20048	6(3)	6(3)			2
10(1)	4(3)	14(4)	20034	20050	14(4)	4(3)	10(1)		2
	2(2)	2(2)	20033	20051	3(1)	3(1)			2
	5(4)	5(4)	20032	20052	4(2)	4(2)			2
	1(1)	1(1)	20031	20053	3(1)	3(1)			2
	4(4)	4(4)	20030	20054	7(2)	7(2)			2
	2(1)	2(1)	20029	20055	26(4)	11(3)	15(1)		2
	2(1)	2(1)	20027	20056	8(3)	8(3)			2
	3(1)	3(1)	20026	20057	4(2)	4(2)			2
	5(1)	5(1)	20025	20058	6(2)	6(2)			2

Description of the Window Items 窗口各項說明

B.Qty買入量	Bid quantity買入數量
Bid買入價	Bid Price買入價格

Ask沽出價	Ask Price沽出價格
A.Qty沽出量	Ask quantity沽出數量
B.Avg買入平均	Average price in Bid side平均買入價格
B.Accu買入累積	Accumulated Volume in Bid side累計買入數量
A.Avg沽出平均	Average price in Ask side平均沽出價格
A.Accu沽出累積	Accumulated Volume in Ask side累計沽出數量

<<General Message Window 一般訊息視窗>>

This window displays messages sent from the system server. Such messages include exchange message (e. g. openings and closings of the market, quote request broadcast, potential information and connection problems, and other information of general interest.)

此視窗顯示系統伺服器提供的資訊。資訊包括各類交易消息 (如開市、閉市、求報價廣播、交易所資訊、連接問題、以及各類利率的消息)



Open the General Message window from the Market Menu. 在”市場資訊”功能表中打開”一般訊息”視窗

<<Order Entry Window 輸入交易指示視窗>>

This window is used for sending orders.

此視窗用來發出交易指令

Open this window from the Order Menu.

The Product ID can either be manually entered or selected by clicking at a prevailing market price or quantity in the Price Information window (the Price & Qty field will also be automatically filled in with the prevailing market price and quantity at the time of clicking).

從“交易指示”功能表中打開此視窗。

產品編號可以手動輸入或者通過點擊報價窗口中正在播報的市場報價或者交易

量來輸入。（報價和交易量將自動隨著市場行情在點擊中更新）

Description of the Window Items 窗口各項說明

Id 代號	Product ID產品代號
Prc 價格	The order price. An order is to be matched at the order price or better 指令價格
Qty 數量	The maximum executable quantity per order specification depending on the Validity. 指令的最大成交量(取決于指令的有效期)
Ref 參考	Free text information. Client information or any other free text information can be entered. 客戶可以自由輸入參考資訊。

<p>Inactive無效</p>	<p>An inactive order. It is not a tradable order unless user activates the order, place to the market. 未生效的指令。除非用戶啟動此指令遞交給市場否則為不可交易指令</p>
<p>5 AO競價</p>	<p>An auction order. An order that does not have a price limit assigned. An auction order is ready to be matched at the Calculated Opening Price (COP) during the Pre-market Opening Period. At the end of the Pre-market Opening Period all unmatched auction orders will be converted to either limits orders or inactive orders. 競價指令。競價指令沒有規定價開盤的最後時段所有未批配的競格價。指競令價將指被令換將成計為算限開價盤指價令進或行未匹生配效。指在令。準備。</p>
<p>Validity有效期</p>	<p>Fok成交或取消 Fill or Kill. It means that the order is to be matched, immediately after submission, at the exact quantity specified in the Qty field or else it will be canceled automatically by the system at once. “成交或取消”消此交易。表示若不能在全部成交此交易的數量，則立即取</p> <p>Fak成交並取消 Fill and Kill. It means that the order is to be matched, immediately after submission, as much as possible, up to quantity specified in the Qty field and the remain in gun matched portion, if any, of the order will be</p>

	<p>canceled automatically by the system at once. “成交並取消”取消。表示盡可能成交此交易的數量，剩餘部分則立即</p> <p>Today即日</p> <p>Rest of day (default). It means unmatched orders will remain in the central order book until the market close of the day. “即日”表示此限價指令保留直到此日的收市</p> <p>GTC到期日</p> <p>Until Expiry. It means that unmatched orders will remain in the central order book until the market close of the expiration day of the product. Unmatched orders without expiry date will be valid until trader's further instruction, i.e. Good Till Cancel Order. “到期日”表示此限價指令保留直到產品的到期日。</p> <p>Date指定日期</p> <p>Specified Date. It means that unmatched orders will remain in the central order book until the market close of the business date specified in the Date field. “指定日期”表示指令保留直到指定日期。</p>
--	------------------------------------------------------------------------------------------------------------------------------------------------------------------------------------------------------------------------------------------------------------------------------------------------------------------------------------------------------------------------------------------------------------------------------------------------------------------------------------------------------------------------------------------------------------------------------------------------------------------------------------------------------------------------------------------------------------------------------------------------------------------------------------------------------------------------------



Condition Order 條件買賣指令

Condition條件	Usage使用方法
Stop Loss限價止損	<p>Buy Order買入指令</p> <p>When the market price is larger than conditional price, then the buy order will be place in the market.</p> <p>當市場報價高於預設價格，那麼買進指令 將被遞交給交易市場。</p> <p>Sell Order賣出指令</p> <p>When the market price is less than conditional price, then the sell order will be place in the market.</p> <p>當市場報價低於預設價格，那麼賣出指令 將被提交給交易市場。</p>
Up Trigger觸發升市	<p>If market price is larger than conditional price, then the order will be place in the market</p> <p>如果市場報價高於預設價格那麼買賣指令</p>

	將被提交給交易市場。
Down Trigger市觸發跌	<p>If market price is less than conditional price, then the order will be place in the market</p> <p>如果市場報價低於預設價格那麼買賣指令將被提交給交易市場。</p>

<<Trade Statistics Window 成交統計窗口>>

POS	Prev.Qty	Day Long	Day Short	Net	Prev.Prc	Day Long	Day Short	Net	Mkt.Prc	P/L
HSI1120013	1	0	0	1	88	0	0	88	1	-4,350.00
HSI1180013	1	0	0	1	2	0	0	2	1	-50.00

This window displays statistics based on the trades.

此視窗顯示的是根據交易進行的匯總統計。

Open the window from the Trades Menu.

從Trades 功能表中打開視窗。

Description of the Window Items 窗口款項說明

POS	Product ID of account position 賬戶的產品編號
Prev. Qty	Traded quantity of Previous Business Day 前一交易日的成交量
Day Long	Today bought volume 今日買入量
Day Short	Today sold volume 今日賣出量
Net	Net Quantity 淨餘量
Prev. Prc	Average Price of Previous Business Day 前一交易日平均價格
Day Long	Today Long Average Price 今日買入均價
Day Short	Today Short Average Price 今日賣出均價
Net	Net Average Price 淨均價
Mkt. Prc	Market Price 市場報價
P/L	Profit / Loss 利潤/損失

<<Ticker Window 市場成交記錄視窗>>



Product	Qty	Price	Log Time	Deal Src
HSIV3	2	11148	14:49:00	
HSI11400J3	1	202	14:49:01	
HSIV3	1	11151	14:49:02	
MHIV3	1	11150	14:49:05	
HSIV3	1	11150	14:49:08	
MHIU3	1	11155	14:49:08	
HSIU3	1	11156	14:49:11	
HSI11000J3	1	401	14:49:17	
HSI11000J3	1	401	14:49:17	

This window can display all trade information in various markets. Information on this window is stored in the local workstation. Therefore, it can only display trades information received during the logged in period. Users will not be able to retrieve any trade details during the logged-off period.

視窗可以顯示在不同市場中的所有交易資訊。此視窗所顯示的資訊被儲存

在地方的工作站中。因此，它可以只顯示登陸以後的交易資訊。用戶將不能得到

任何未登陸時的詳細交易資訊。

Open the Ticker window from the Trades Menu.

在”成交”功能表中打開”市場成交記錄”視窗。

Description of the Window Items 視窗各項內容說明

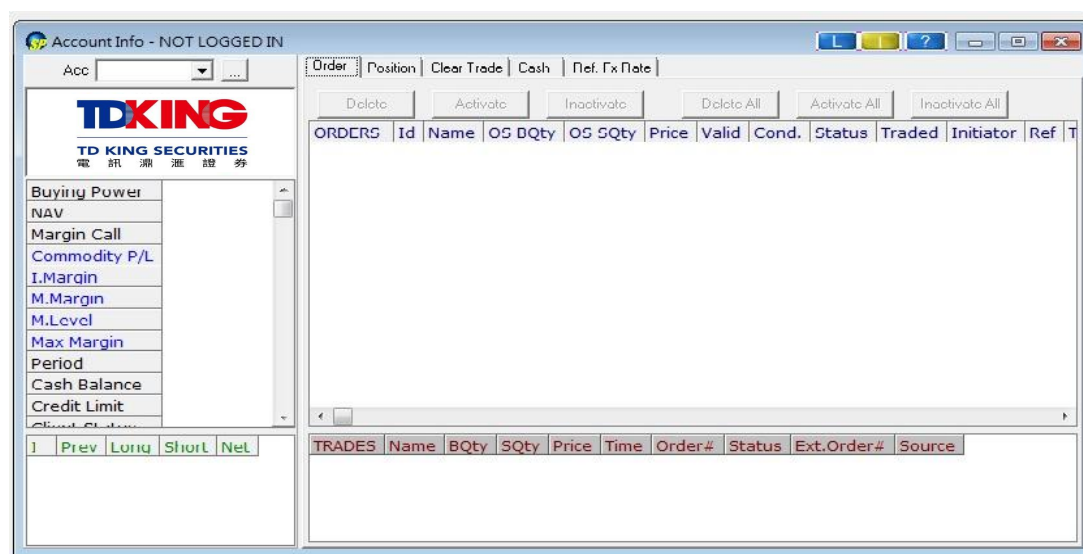
Product	Product ID產品編號
Qty	Traded quantity成交量
Price	Traded price 成交價格
Log Time	Time when tick was created 資訊產生時間
Deal Src	Show special deal flags to indicate how the order was

	<p>matched</p> <p>顯示特殊的交易標記說明是什麼交易類型的匹配。</p> <p>Deal flag available in these columns are:</p> <p>有效的交易標記如下：</p> <p>BB - Bulletin Board Orders公告單</p> <p>STDC - Standard Combination Orders組合單</p> <p>INT - Block Trades</p> <p>AUC - Auction Orders競價單</p> <p>MPS - Deal Registration</p>
--	--------------------------------------------------------------------------------------------------------------------------------------------------------------------------------------------------------------------------------------------------------------------------------------------------

<<Account Information Window 戶口資料視窗>>

Open this window from the Account menu.

從”戶口”功能表打開視窗



Account Summary 戶口概要

Upper Portion - Account Balance Summary

上部分內容是戶口資金概要

Buying Power購買力= Total Cash + Credit Limit + Commodity P/L - Initial Margin

=現金總額+信貸限額+商品盈虧-基本保證金

Net Asset Value(NAV)

資產淨值= Total Cash + Commodity P/L

=現金總額+商品盈虧

Lower Portion - Account Position Summary

下部分內容戶口持倉概要

Description of the Window Items

Id代號	Product ID of account position商品代號
Prev上日	Traded quantity of Previous Business Day 前一交易日的成交總量
Long長倉	Today bought volume今日的買入量
Short短倉	Today sold volume今日的賣出量
Net淨倉	Net Quantity淨量

Order Page買賣指示頁面

買賣指示 持倉 成交結算 現金結餘										
刪除		生效		無效		全部刪除		全部生效		全部無效
買賣指示	代號	買入餘數	沽出餘數	價格	有效期	條件	狀況	已成交	參考	時間標記
204	HSIM5		1	13946	即日		工作中	0		2005/06/17 16:3
205	HSIM5		1	13948	即日		工作中	0		2005/06/17 16:3
206	HSIM5		1	13943	即日		工作中	0		2005/06/17 16:3
◀ ▶										
成交	買入量	沽出量	價格	時間	指示#	外部指示#				
HSIM5	1		13942	16:07:36	202	F0C3D2E1:B4879B69				
HSIM5	1		13937	16:09:50	201	F0C3D2E1:B4879B6E				

Upper Portion - Order Book 上半部份-買賣指令

This part of window is used for displaying and working with orders. It manages the orders in the order book, such as canceling, changing, activating, and inactivating orders. This window is dynamically updated upon changes of the orders, e.g. when an order is fully traded the order will disappear from the window.

視窗的這一部分用來進行有關指令的顯示和操作。可以處理各種指令比如取消、改變、生效以及無效。視窗將根據指令的改變隨時更新：比如當一個指令已經完成，指令將在視窗中消失。

Lower Portion - Company Trade 下半部份- 戶口成交

This part of window is used for displaying details of the contracts which have traded during the trading day

視窗的這部分用來顯示交易日中已交易合同的具體內容

Description of the Window Items 視窗各項內容介紹

ORDERS 買賣指示	Internal Order Number 內部指示編號
Id 代號	Product ID 商品代號
OS BQty 買入餘數	The number of quantity want to buy 指示買入數量
OS SQty 沽出餘數	The number of quantity want to sell 指示沽出數量
Price 價格	Target Price 指示價格
Valid 有效期	Validity 指示有效期
Cond. 條件	If condition is matched, order will be send to market immediately 當符合條件，買賣指示立即放出市場

Traded 已成交	Traded quantity已成交數量
Ref 參考	Reference備註欄
T.Stamp 時間標記	Order Time指示時間
Ext.Order 外部指示	# External Order number (<i>unique</i>)外部指示編號
Initiator 原發者	User ID who create this order firstly指示原發者

Position Page 持倉頁面

買賣指示 持倉 成交結算 現金結餘								
持倉	上日持倉	今日長倉	今日短倉	淨倉	市價	盈虧	兌換率	盈虧(基本貨幣)
HSIM5		2@13939.50		2@13939.50	13935	-450.00 HKD	1.0000	-450.00 HKD

This page is used for displaying the detail of account position.

這一頁用來顯示戶口持倉的具體資訊。

Description of the Window Items 視窗各項內容介紹

POS 持倉	Product ID商品代號
Prev 上日持倉	Position & average price in Previous Business Date
Day Long 今日長倉	Long Position & average price in Today
Day Short 今日短倉	Short Position & average price in Today

Net 淨倉	Net Position & average price
Mkt.Prc市價	Market Price
P/L 盈虧	Profit/Loss
Fx Rate 兌換率	Currency Rate
P/L (Base Ccy) 盈虧(基本貨幣)	Profit/Loss in Base Currency

Clear Trade Page成交結算頁面

成交	買入量	沽出量	成交價	成交#	狀況	參考	時間	指示價	指示#	外部指示#	原發者
HSIM5	1		13942	4			16:07:36	13942	202	F0C3D2E1:B4879B69	SPCLIENT
HSIM5	1		13937	5			16:09:50	13937	201	F0C3D2E1:B4879B6E	SPCLIENT

This page is used for displaying the total clearing trades of the current business day in clearing house.

這一頁面用來顯示所有在交易所正在結算的交易。

Description of the Window Items視窗各項內容介紹

TRADES 成交	Product ID成交商品代號 i
BQty買入量	The number of traded quantity in Buy side 買入數量
SQty沽出量	The number of traded quantity in Sell side 賣出數量
Price 成交價	Trade Price 交易價格

Trade# 成交#	Internal Trade Number成交編號
Status 狀況	Status 狀況
Ref 參考	Reference 備註欄
Time 時間	Trade Time 交易時間
Order Prc指示價	Order Price 指示價格
Order# 指示#	Internal Order Number內部指示編號
Ext.Order#外部指示#	External Order number (<i>unique</i>) 外部指示編號
Initiator原發者	User ID who create this order firstly 指示原發者

Cash Page現金結餘頁面

結前	上日結餘	未交收	今日提存	現金總額	兌換率	現金(基本貨幣)
HKD	0.00 HKD	0.00 HKD	10,000,000.00 HKD	10,000,000.00 HKD	1.0000	10,000,000.00 HKD

This page is used for displaying the detail of account balance.

這一頁面用來顯示戶口之現金結餘的具體內容。

Balances 結餘	Balance Currency 金額的貨幣
Cash Bf 上日結餘	Cash Brought Forward 上日現金結餘
Unsettle 未交收	Unsettle Balance 未交收金額
Today In/Out 今日提存	Today Cash Deposit/Withdraw今日現金提存
Cash 現金總額	Total Cash = Cash Bf + Unsettle + Today In/Out 現金總額=上日結餘+ 未交收+ 今日提存
Fx Rate 兌換率	Currency Rate 兌換率
Cash (Base Ccy) 現金(基本貨幣)	Total Cash in Base Currency 相等於基本貨幣的現金總額

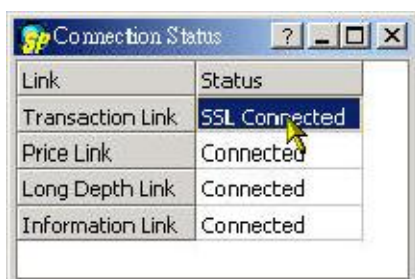
<<Connection Status Window 連線狀況視窗>>

Open the window from the Status Menu.

This window shows whether the connection status between the local workstation and your broker's server is normal.

從Status 功能表中打開視窗。

此視窗顯示的是地方工作站和你的經紀人伺服器的連接是否正常。



1. SSL Connected/Connected in the "Status" column indicates connection between the workstation and the broker's server is normal

"狀況" 裏 "SSL已連線" / "連線" 顯示的是

地方工作站和你的經紀人伺服器的連接是正

常。

2. Disconnected in "Status" column indicates connection between the two is broken.

“狀況”裏的“沒有連線”顯示兩者的連接中斷。